

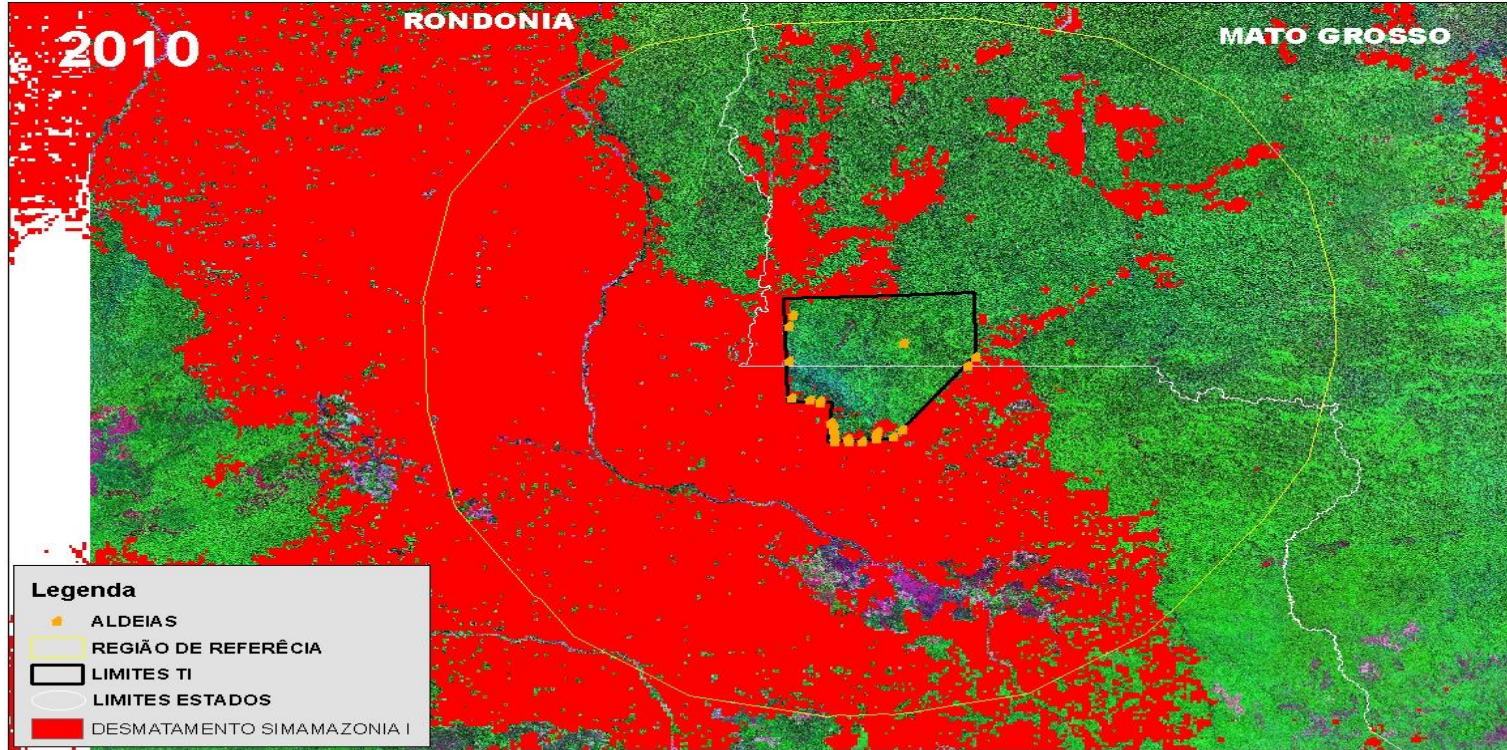
FUNDO BRASILEIRO PARA  
A BIODIVERSIDADE

 **FUNBIO** 15 <sup>a</sup> n o s





# Threats to the Sete de Setembro land



Nota Técnica:  
Desmatamento - SINAMAZONIA I  
Limites TI Sete de setembro - FUNAI  
Imagens Landsat 5 - Composição RGB - 2007

0 15 30 60 90 120  
Kilometers



# Surui Proposal: beyond REDD+



- **THE SURI PROJECT** - A proposed long-term sustainable management plan: Ethno-environmental Management Plan of the Sete de Setembro Indigenous Land. Life Plan for the next 50 years.
- **THE CARBON PROJECT** - A part of the Surui Project.
- **THE SURUI FUND** - long-term financing mechanism for the implementation of the Surui Project.

# REDD+ Information



- The **Standard**: VCS (Voluntary Carbon Standard) and CBA (Community & Biodiversity Assessment) using a mosaic methodology.
- The **Baseline**: historical baseline + projection based on SIMAMAZÔNIA model adapted to the Surui project, considering infrastructure pressures to the region.
- The **PDD** (Project Development Document) was finalized and will be sent for validation in July / 2011.
- The **Verified Emissions Reductions (VERs)** will represent more than 300,000 tons of CO<sub>2</sub> by 2012 and 8 million t CO<sub>2</sub> by 2030.



# Partners



**USAID**  
FROM THE AMERICAN PEOPLE

**Google**<sup>™</sup>



Associação Metareilá do Povo Indígena Suruí



# Leadership: Associação Metareilá do Povo Indígena Suruí



**100%  
Indigenous**

# SURUÍ FUND

# Principles for a long-term REDD+ Benefit Sharing Mechanism



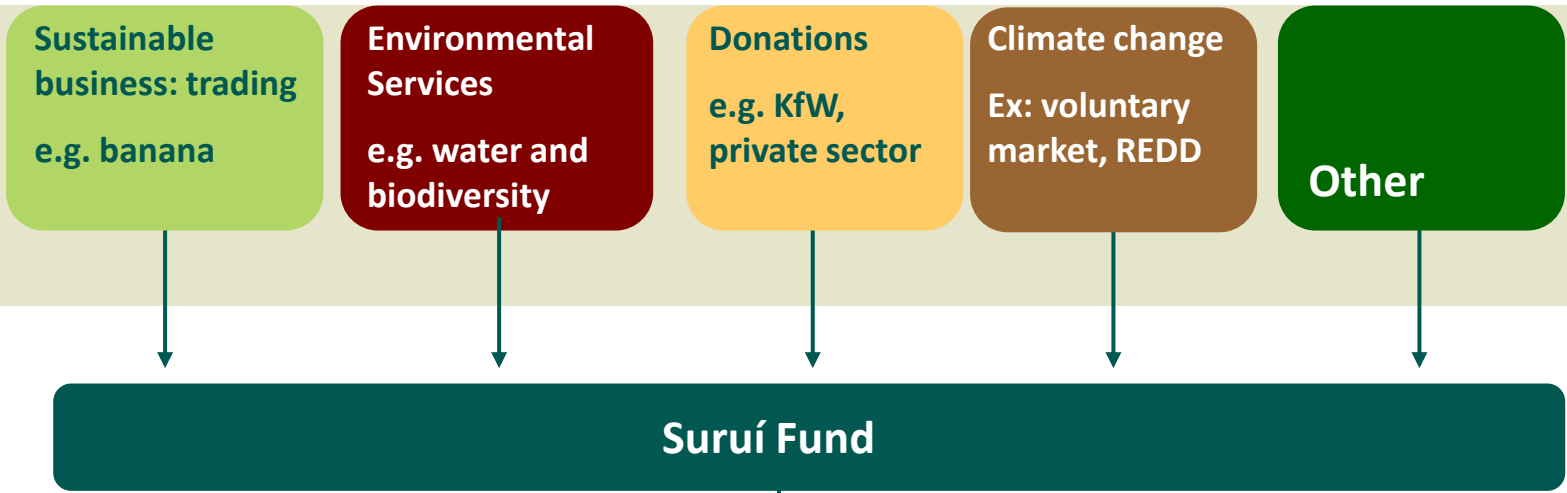
- Long-term relationship based on trust – community & financial mechanism manager
- Governance: well-established associations and individual leaders
- Participation in the development and implementation of REDD+ actions and in decision making processes.
  - Community Level: Prior Informed Consent and the Surui Carbon Project - 2010
  - Public consultation: encourage the participation of interested individuals at Cacoal city on March,24/2011 (5th consult)
- Transparency: all information about REDD+ actions in simple language

# Principles for a Long-term REDD+ Benefit Sharing Mechanism

- A benefit can be delivered as money, goods and services
- REDD+ is not the only source of income
- Local resources implementation - Etnoenvironmental Management Plan of the Sete de Setembro Indigenous Land
- Steps for building a Benefit Sharing Mechanism:
  1. Design of the mechanism
  2. Implementation:
  3. Community's Capacity Building



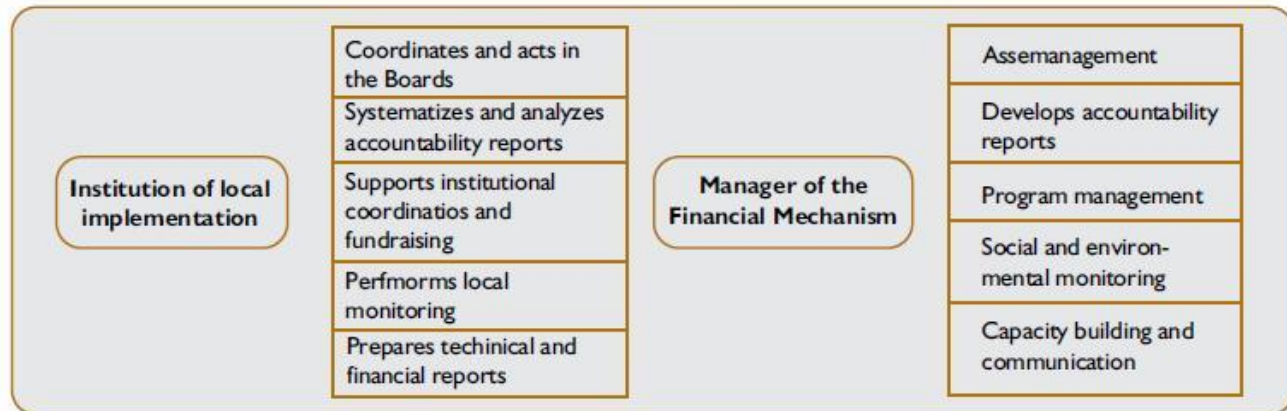
# Origins of Resources



# Destination of resources

## Portfolio of programs, projects and/or actions





# Strategy for financial allocation in the Suruí Fund



Productives

Cultural and Social

Institutional strengthening

External auditing

Revolving resources

Operational costs and capital good

Portfolio committee

No resources allocated

Advisory Board of Public Policy

Board of Directors

Advisory Board of Governance

Extinguishing resources

Pre-investment

equipments infrastructure

Project execution

Advisory Board of Governance

Board of Directors

Endowment resources

Capital goods

Monitoring and supervising costs

Recurrent costs

Advisory Board of Public Policy

Board of Directors

Asset management

Board of Investors

# Suruí Fund: Results



- Institutional diagnosis of the Paiter-Suruí people and main partners;
- Planning of the demand for resources (short, medium and long term);
- Design of the impact monitoring and investment base line;
- Identification of alternative potential sources of resources;
- Design of the governance, operational and administrative structures
- Project flows and resources;



# Suruí Fund: Results



- **Planning tools** : developed programs/lines of action, annual operational plan, multi-year operational plan; Business Plans;
- **Action tools** – developed templates for: call for proposals; terms of reference; letters of consultation; contracts and projects.
- Developed **monitoring tools**
- Developed **manuals** for implementation, partial and final accountability, final evaluation and reports
- Developed **Communications Plan**;
- Developed **policy for asset management**:
- Paiter-Suruí **capacity building** on the developed tools.



## Funbio

Ângelo dos Santos  
angelo.santos@funbio.org.br  
Tel: (21) 2123-5301

<http://www.funbio.org.br>

