

# Julius Bär

## ONE-PAGER FOR DONORS

31.08.2021

### Market comment

Given the mixed economic data of late and the rising cases of the delta variant of the coronavirus, investors remained hopeful that the US Federal Reserve would delay the start of tapering. Meanwhile, increasing regulations in China remained a challenge for investors. Against this backdrop, developed equity markets continued their upward trend, with a number of indices again reaching new all-time highs. Growth stocks continued to outperform value stocks. Among currencies, the strengthening of the US dollar stood out.

In this context, the portfolio has performed well, outperforming its benchmark by 0.54%. The earnings season continued on a positive note and our portfolio companies' second quarter results have been very strong so far, exceeding expectations in most cases, especially among healthcare companies such as Edwards Lifesciences and Novo Nordisk, but also in other sectors like consumer discretionary. In this context, we switched Cooper into Linde and added the food and ingredients company Kerry Group to the portfolio. On the other hand, we took partial profits on Deckers Outdoor, whose shares continued to rally after reporting very strong results. Moreover, on the fixed income side, we reinvested the maturing bond from ING into the supranational issuer World Bank.

US inflation concerns have receded, but investors will not get clarity on the topic this year, as data distortion is expected to continue well into next year. Volatility is low and falling across asset classes, including currencies, as the recovery continues despite the spreading of the Covid-19 delta variant. Blockbuster earnings have catapulted equity markets to new all-time highs, offsetting concerns around the delta variant and US Federal Reserve tapering. Global growth momentum has likely peaked in Q2. We therefore continue to prefer defensive and growth stocks. Among the defensive, healthcare remains one of our most preferred sectors, offering defensive growth at an attractive price.

### Portfolio summary

|                      | Month - August 21     | 2021                  |
|----------------------|-----------------------|-----------------------|
| Initial*             | 124'280'697.67        | 117'447'258.83        |
| Deposits             | 0.00                  | 0.00                  |
| Withdrawals          | 0.00                  | 0.00                  |
| Result (performance) | 3'215'444.65          | 10'048'883.49         |
| <b>Final</b>         | <b>134'802'127.20</b> | <b>134'802'127.20</b> |

\*31.12.2020 for "2021"; 31.07.2021 for "Month"

The sole legally binding version is the official report.

### Bank Julius Baer & Co. Ltd.

Bahnhofstrasse 36, P.O. Box, 8010 Zurich, Switzerland

T +41 (0) 58 888 1111, F +41 (0) 58 888 1122

www.juliusbaer.com

# Julius Bär

## Allocation per asset class and performance in USD

| Asset class                     | Allocation per asset class and performance in USD |             |              |               | Benchmark    |               |
|---------------------------------|---|-------------|--------------|---------------|--------------|---------------|
|                                 | Market value                                      | %           | MTD          | YTD           | MTD          | YTD           |
| Cash and short-term investments | 12'332'719.90                                     | 9.15%       | -0.01%       | 1.93%         | 0.00%        | 0.06%         |
| Bonds and similar positions     | 37'648'742.46                                     | 27.93%      | -0.11%       | -0.47%        | -0.33%       | -0.38%        |
| Equities and similar positions  | 82'783'070.09                                     | 61.41%      | 3.92%        | 25.54%        | 3.18%        | 19.03%        |
| Alternative Investments         | 2'037'594.75                                      | 1.51%       | 0.21%        | 1.58%         | 0.08%        | 0.72%         |
| <b>Total</b>                    | <b>134'802'127.20</b>                             | <b>100%</b> | <b>2.34%</b> | <b>14.96%</b> | <b>1.80%</b> | <b>11.00%</b> |

## U.S.A. Consumer Price Index (CPI)

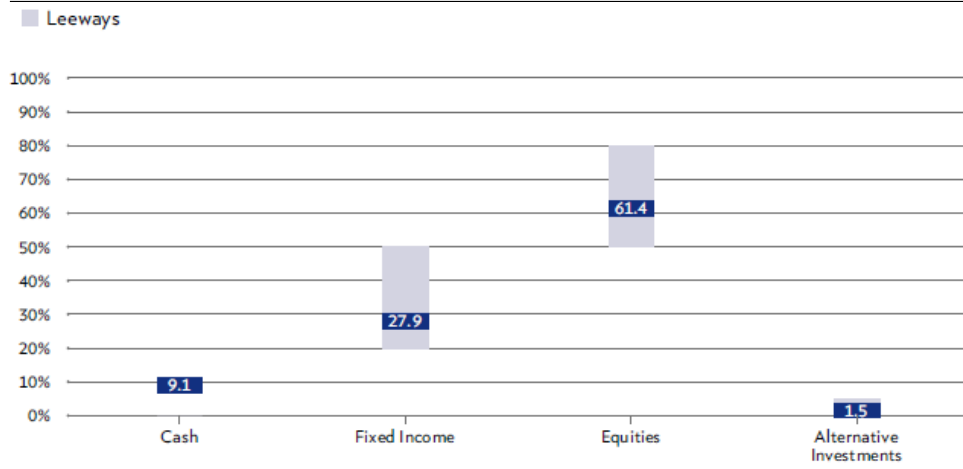
|                              |       |
|------------------------------|-------|
| 1-month % change (August 21) | 0.27% |
| 2021 % change (August 21)    | 4.38% |

## Performance

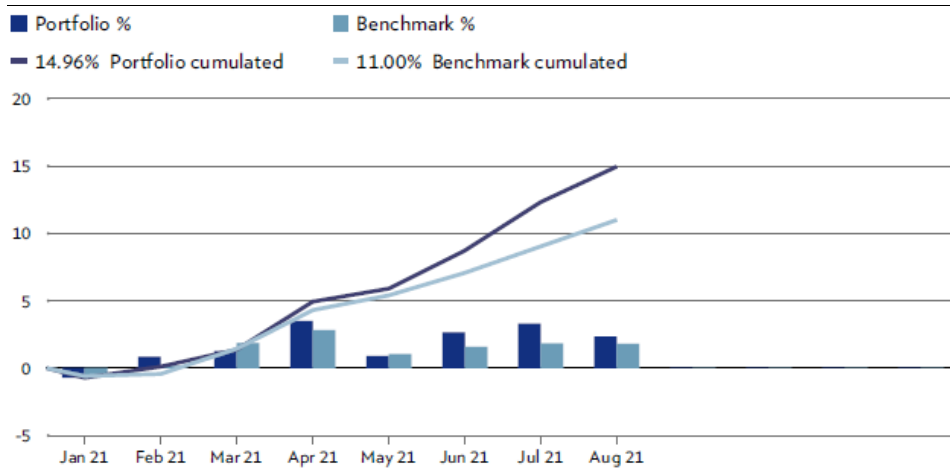
| Month (August 21) |       | Year (2021) |        |
|-------------------|-------|-------------|--------|
| Nominal           | Real  | Nominal     | Real   |
| 2.34%             | 2.07% | 14.96%      | 10.58% |

# Julius Bär

## Allocation per asset class

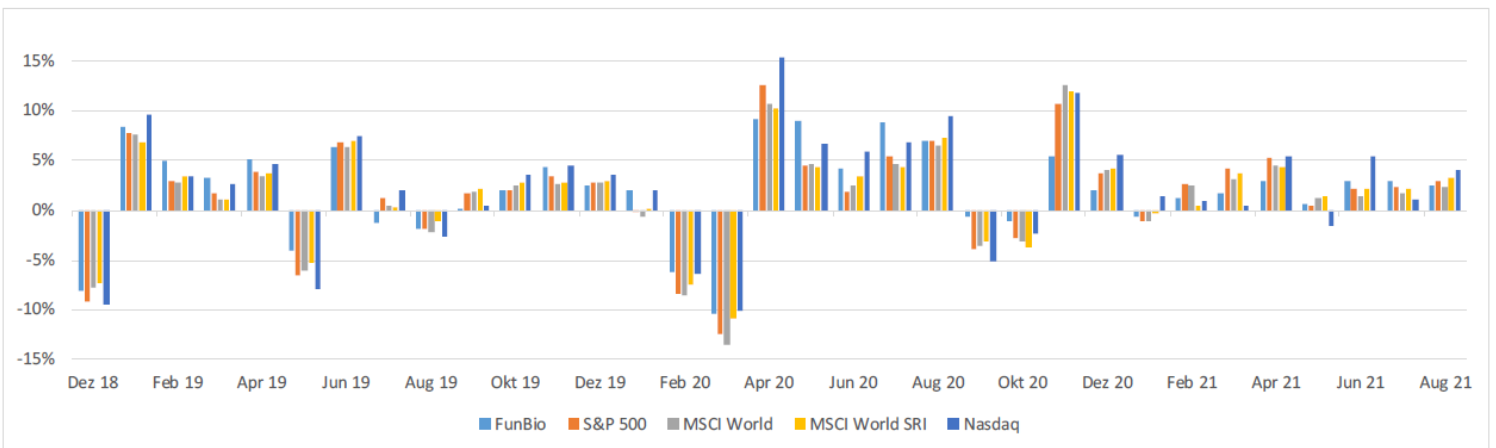
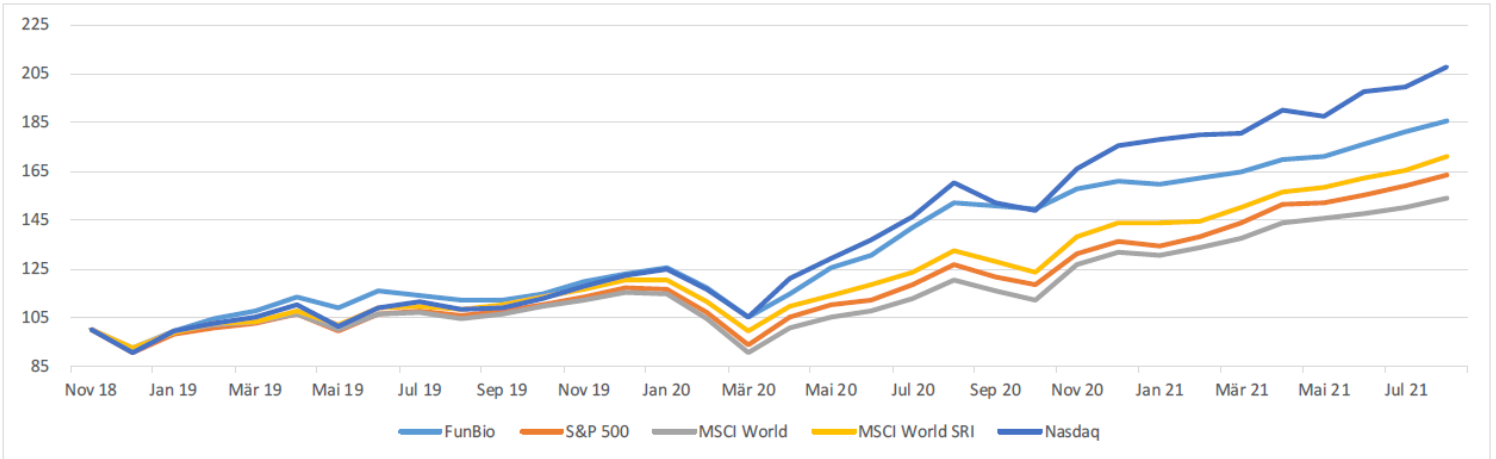


## Monthly gross performance YTD - Benchmark and portfolio



# Julius Bär

## Development of equity - comparison with equity indices



# Julius Bär

| Date   | FunBio  | S&P 500 | MSCI World | MSCI World SRI | Nasdaq  |
|--------|---------|---------|------------|----------------|---------|
| Dez 18 | -8.15%  | -9.18%  | -7.71%     | -7.28%         | -9.48%  |
| Jan 19 | 8.41%   | 7.87%   | 7.68%      | 6.86%          | 9.74%   |
| Feb 19 | 4.94%   | 2.97%   | 2.83%      | 3.46%          | 3.44%   |
| Mär 19 | 3.35%   | 1.79%   | 1.05%      | 1.09%          | 2.61%   |
| Apr 19 | 5.08%   | 3.93%   | 3.37%      | 3.82%          | 4.74%   |
| Mai 19 | -4.10%  | -6.58%  | -6.08%     | -5.24%         | -7.93%  |
| Jun 19 | 6.42%   | 6.89%   | 6.46%      | 6.99%          | 7.42%   |
| Jul 19 | -1.23%  | 1.31%   | 0.42%      | 0.28%          | 2.11%   |
| Aug 19 | -1.79%  | -1.81%  | -2.24%     | -1.08%         | -2.60%  |
| Sep 19 | 0.13%   | 1.72%   | 1.94%      | 2.16%          | 0.46%   |
| Okt 19 | 2.06%   | 2.04%   | 2.45%      | 2.77%          | 3.66%   |
| Nov 19 | 4.41%   | 3.40%   | 2.63%      | 2.79%          | 4.50%   |
| Dez 19 | 2.46%   | 2.86%   | 2.89%      | 3.04%          | 3.54%   |
| Jan 20 | 2.06%   | -0.16%  | -0.68%     | 0.02%          | 1.99%   |
| Feb 20 | -6.23%  | -8.41%  | -8.59%     | -7.46%         | -6.38%  |
| Mär 20 | -10.48% | -12.51% | -13.47%    | -10.84%        | -10.12% |
| Apr 20 | 9.27%   | 12.68%  | 10.80%     | 10.26%         | 15.45%  |
| Mai 20 | 9.02%   | 4.53%   | 4.63%      | 4.43%          | 6.75%   |
| Jun 20 | 4.24%   | 1.84%   | 2.51%      | 3.47%          | 5.99%   |
| Jul 20 | 8.85%   | 5.51%   | 4.69%      | 4.41%          | 6.82%   |
| Aug 20 | 7.05%   | 7.01%   | 6.53%      | 7.30%          | 9.59%   |
| Sep 20 | -0.67%  | -3.92%  | -3.59%     | -3.09%         | -5.16%  |
| Okt 20 | -1.03%  | -2.77%  | -3.14%     | -3.68%         | -2.29%  |
| Nov 20 | 5.48%   | 10.75%  | 12.66%     | 11.94%         | 11.80%  |
| Dez 20 | 2.08%   | 3.71%   | 4.14%      | 4.15%          | 5.65%   |
| Jan 21 | -0.63%  | -1.11%  | -1.05%     | -0.24%         | 1.42%   |
| Feb 21 | 1.31%   | 2.61%   | 2.45%      | 0.51%          | 0.93%   |
| Mär 21 | 1.76%   | 4.24%   | 3.11%      | 3.78%          | 0.41%   |
| Apr 21 | 3.03%   | 5.24%   | 4.52%      | 4.35%          | 5.40%   |
| Mai 21 | 0.60%   | 0.55%   | 1.26%      | 1.37%          | -1.53%  |
| Jun 21 | 3.03%   | 2.22%   | 1.40%      | 2.19%          | 5.49%   |
| Jul 21 | 3.03%   | 2.27%   | 1.72%      | 2.21%          | 1.16%   |
| Aug 21 | 2.47%   | 2.90%   | 2.35%      | 3.36%          | 4.00%   |